

## JAYPEE UNIVERSITY OF INFORMATION TECHNOLOGY, WAKNAGHAT

MAKEUP EXAMINATION- April-2018

B.Tech 2<sup>nd</sup> Semester

COURSE CODE: 10B11EC211

MAX. MARKS:25

COURSE NAME: BASIC ELECTRONICS DEVICES AND CIRCUITS

COURSE CREDITS: 4

MAX. TIME: 1.5 Hrs

**Note:** All questions are compulsory. Carrying of mobile phone during examinations will be treated as case of unfair means.

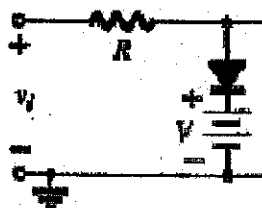
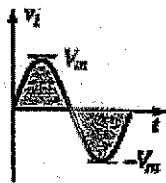
1. .

- Draw the circuit diagram of collector feedback bias circuit for common emitter and derive an expression for base current, collector current and  $V_{CE}$ .
- For the collector feedback bias circuit, considering the value of  $\beta = 90$ ,  $R_C = 4.7 \text{ k}\Omega$ ,  $R_F = 250 \text{ k}\Omega$ ,  $R_E = 1.2 \text{ k}\Omega$  and  $V_{CC} = 10\text{V}$ , determine the value of  $I_C$  and  $V_{CE}$ .

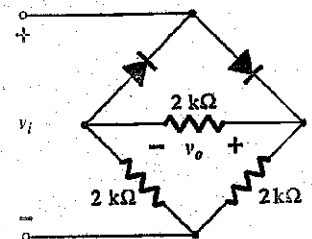
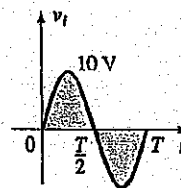
[6+3]

- Draw the neat and well labeled circuit diagram for full wave bridge rectifier and explain its working. Also determine the value of PIV for each diode of bridge rectifier circuit. [8]
- Draw the output waveform and explain the working for the following circuits: [2+2+4]

a.



c.



b.

